

CARDIGAN MUJER

Ref. 19

DESCRIPCIÓN

- Chaqueta de mujer con escote en V
- Cierra central de botones
- Bolsillos en la parte central con botón
- Manga larga con puño acanalado
- Bajo con acabados acanalados
- Tejido de punto acrílico Low pillín
- Disponible en cuatro colores



017

Azafata

013

Gris Oscuro

019

Marino

020

Beige Claro

PROPIEDADES FUNCIONALES



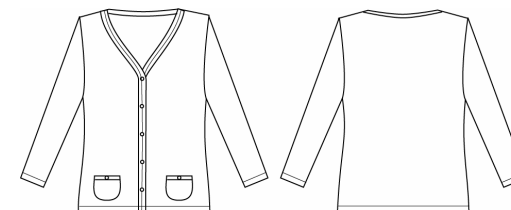
Fácil planchado:

Tejido con acabado easy iron o antiarrugas .



Gran Resistencia:

Alta durabilidad.



CONSERVACIÓN

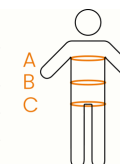


TALLAS Y MEDIDAS

A PECHO
B CINTURA
C CADERA

	XS	S	M	L	XL	2XL
A PECHO	82	86	90	94-98	102-106	110-114
B CINTURA	64	68	72	76-80	84-88	92-96
C CADERA	88	92	96	100-104	108-112	116-120

Medidas anatómicas en cm





WOMEN'S CARDIGAN

Ref. 19

DESCRIPTION

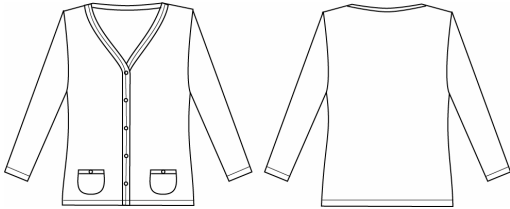
- Women's jacket with V neck
- Central button closure
- Pockets in the center with button
- Long sleeves with ribbed cuffs
- Ribbed hem
- Low pilling acrylic knit fabric
- Available in four colors

FUNCTIONAL PROPERTIES

-  **Easy iron:**
Fabric with easy-iron or anti-wrinkle finish
-  **High-resistance:**
High durability



- 017**
Blue
- 013**
Dark Grey
- 019**
Navy
- 020**
Light Beige



SIZES AND MEASUREMENTS

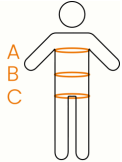
CARE



A CHEST
B WAIST
C HIP

	XS	S	M	L	XL	2XL
A CHEST	82	86	90	94-98	102-106	110-114
B WAIST	64	68	72	76-80	84-88	92-96
C HIP	88	92	96	100-104	108-112	116-120

Anatomical measures in cm



CARDIGAN POUR FEMME

Réf. 19

DESCRIPTION

- Veste pour femme avec encolure en V
- Fermeture centrale à boutons
- Poches au centre avec bouton
- Manches longues avec poignets côtelés
- Bas avec finitions côtelées
- Tissu en tricot acrylique Low Pillin
- Disponible en quatre couleurs



PROPRIÉTÉS FONCTIONNELLES



Repassage facile:

Tissu avec finition easy iron ou anti-rides".



Grande Résistance:

Haute durabilité

017

Bleu

013

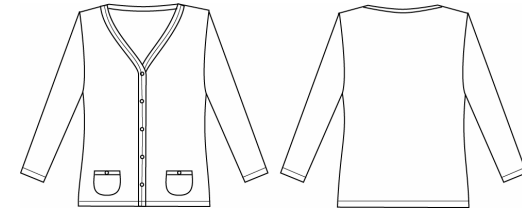
Gris Fonce

019

Bleu Marine

020

Beige Clair



ENTRETIEN

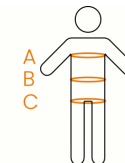


TAILLES AND MESURES

A POITRINE
B TAILLE
C BASSIN

	XS	S	M	L	XL	2XL
A POITRINE	82	86	90	94-98	102-106	110-114
B TAILLE	64	68	72	76-80	84-88	92-96
C BASSIN	88	92	96	100-104	108-112	116-120

Mesures anatomiques en cm





ES

EN

FR

PT

CARDIGÃ MULHER

Ref. 19

norvil

DESCRIÇÃO

- Casaco para mulher com decote em V
- Fecho de botão central
- Bolsos na parte central com botão
- Manga comprida com punho canelado
- Bainha com acabamento canelado
- Tecido de malha acrílica com anti-pilling
- Disponível em quatro cores



PROPRIEDADES FUNCIONAIS



Fácil de passar:

Tecido com acabamento easy iron ou anti-rugas



Grande resistência:

Alta durabilidade

017

Azul

013

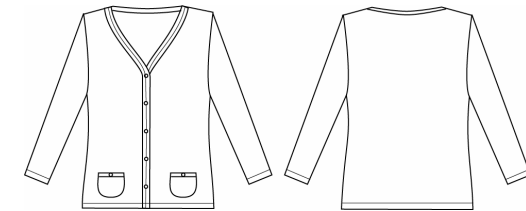
Cinzeno Escuro

019

Marinho

020

Bege Claro



MANUTENÇÃO



TAMANHOS E MEDIDAS

A PEITO
B CINTURA
C ANCA

	XS	S	M	L	XL	2XL
A PEITO	82	86	90	94-98	102-106	110-114
B CINTURA	64	68	72	76-80	84-88	92-96
C ANCA	88	92	96	100-104	108-112	116-120

Medidas anatômicas em cm

